

State of Wyoming Corner Record

(In compliance with the *CORNER PERPETUATION AND FILING ACT*, Wyoming Statutes, 1997, Section 33-29-140, et. seq., and the Rules and Regulations of the Board of Registration for Professional Engineers and Professional Land Surveyors)

Reverse side of this form may be used if more space is needed.

Record of original survey and citation of source of historical information (if corner is lost or obliterated). Description of corner monumentation evidence found and/or monument and accessories established to perpetuate the location of this corner. Sketch of relative location of monument, accessories, and reference points with course and distance to adjacent corner(s) (if determined in this survey). Method and rationale for reestablishment of lost or obliterated corner.

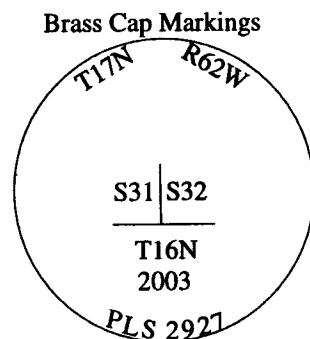
G.L.O. Record: Edwin James, U.S. Deputy Surveyor, August 17, 1870.
80.00 Chains Set a lime stone 16 x 12 x 5 for corner to sections 31 & 32.

Subsequent Record: Laramie County Road Records, County Field Book No. 41, Page 2, circa July 15, 1930 indicates the road was surveyed and notes "Set CR 56.4' 45° NE & NW."

Found: A small round headed square spike, 12" long, 4" below the graded gravel Laramie County Road No. 227, bent to the west. This is a typical type of spike used by local surveyors, beginning in the early 1900's and termed "boat spike" in their field notes. The "boat spike" was found to be approximately 7' west of the intersection of Laramie County Roads No. 227 and 149. This spike was accepted as a faithful perpetuation of the original and subsequent surveys.

Set: At the center position of the square headed bolt (position of where the bolt was set vertically in the road), I set a No. 6 x 24" rebar with 3 1/4" diameter brass cap, marked as noted below, 6" below the graded roadway.

See back of this sheet for measurements to other found and or set and accepted corners in the area.



Date of Field Work: February 12, 2003

Office Reference: Burns North 26109

CROSS INDEX DIAGRAM

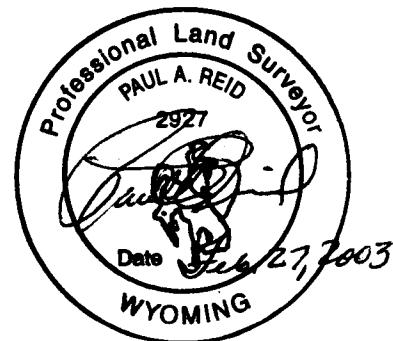
1	2	3	4	5	6	7	8	9	10	11	12	13	14	15	16	17	18	19	20	21	22	23	24	25	
A																									A
B																									B
C	6			5				4					3					2						1	C
D																									D
E																									E
F																									F
G																									G
H																									H
J																									J
K																									K
L																									L
M	18																								M
N																									N
O																									O
P																									P
Q	19																								Q
R																									R
S																									S
T																									T
U	30																								U
V																									V
W																									W
X																									X
Y	31																								Y
Z																									Z
	1	2	3	4	5	6	7	8	9	10	11	12	13	14	15	16	17	18	19	20	21	22	23	24	

Firm/Agency, Address

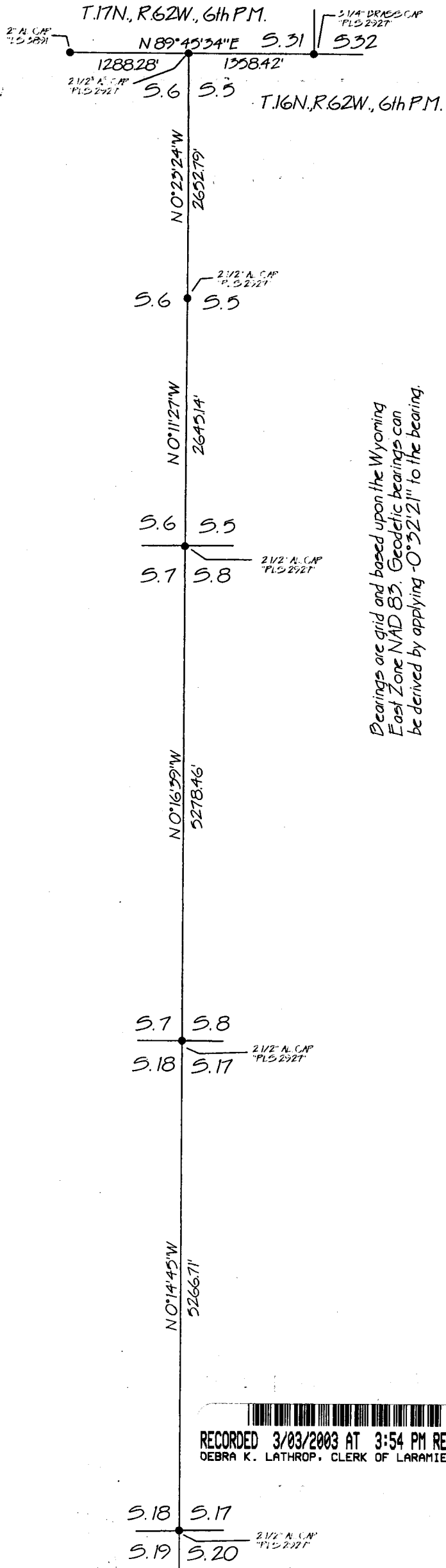
Paul A. Reid, PLS
1533 Pinion Drive
Cheyenne WY
Phone (307) 637-3400

This corner record was prepared by me or under my direction and supervision.

SEAL & SIGNATURE



Corner Name: Southwest Corner Section: 32 T.17 N., R. 62 W., 6th P.M., Cross-Index No.: Z-5
RPEPLS/PLSW: MARCH 1994/97



Bearings are grid and based upon the Wyoming East Zone NAD 83. Geodetic bearings can be derived by applying -0°32'21" to the bearing.

